



Township of Dawn-Euphemia Memorial Tree Planting Policy

For the purpose of providing residents with a Memorial Tree program to pay tribute to their loved ones while providing hope for the future of the environment.

Intent: A memorial tree is a fitting tribute, keeping a memory of a loved one alive in an eco-friendly and peaceful manner. Typically seen as a lasting symbol of life, a memorial tree is planted in remembrance of the deceased, giving family and friends a place to visit and feel close to the person who has passed away.

Procedure: Applications are received at the Municipal Office for a memorial tree, to be planted at designated areas at the Community Centre grounds in Florence, Rutherford Park, or Shetland Park. Specific location to be determined by the Public Works Superintendent. Residents can choose from a number of trees pre-approved by Council and chosen for their growth potential and native to the community. Applications for Memorial Trees are accepted year-round and available via the website and Municipal Office. Trees will be planted each year in the fall, when weather conditions permit. Applications will be accepted at the Municipal Office with the applicable fee of \$150, which includes the cost of the tree planting and initial maintenance. Donors will be notified once the tree is planted. Applications can be submitted to the Municipal Office for a Memorial Tree for a loved one with ties to the community.

The Township shall use best management practices to assist the memorial tree so that it survives and thrives. However, the Township does not guarantee the tree will survive and is not responsible for the replacement of the tree if it dies, is knocked over, vandalized or otherwise damaged or removed.

A permanent record of all donations and the people they commemorate will be kept in a memorial registry located at the municipal office.

The \$150 fee will need to be paid in full at the time of submission. Applicants may submit their request to the Municipal Office at 4591 Lambton Line, RR4 Dresden, or contact the Municipal Office at 519-692-5148 or admin@dawneuphemia.on.ca, or www.dawneuphemia.ca for more information.

Residents and non-residents may purchase a tree on behalf of a deceased person provided the departed has ties to the municipality. The applicant may choose from the following trees:

- **Freeman Maple** – This sturdy hybrid is very common in this region, with brilliant red-orange colour in the fall. This tree is a hybrid of a red maple and a silver maple.



- **Tulip Tree** – This large, fast growing tree, up to 35 meters tall produced yellow-green flowers which resemble a tulip flower and bloom in the spring.

- **Assorted Magnolia** – This variety, including Multi-Stem, Tree form, and Jane Magnolia are characterized by large fragrant flowers which may be bowl-shaped or star-shaped, in shades of white, pink, purple, green or yellow.



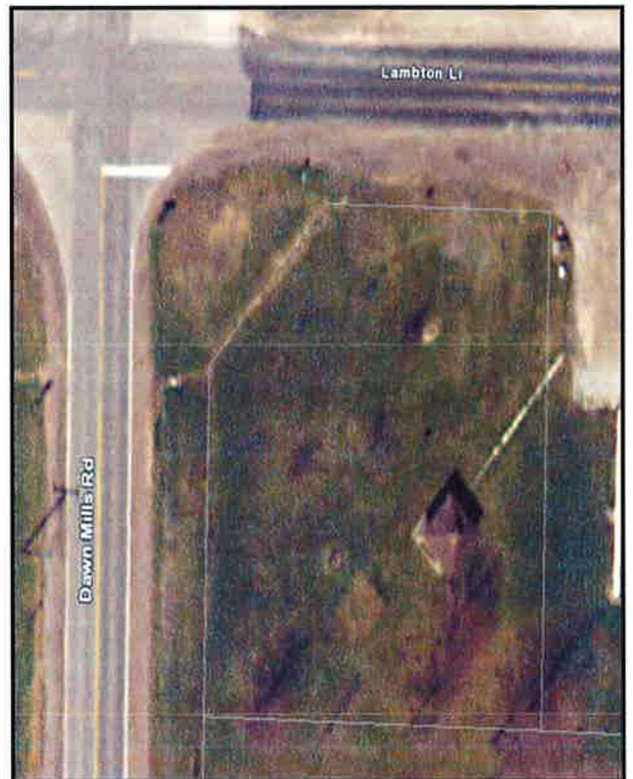
- **Eastern Redbud** - Clusters of tiny magenta buds swell into showy rosy pink flowers in early spring before the leaves appear, with the long-lasting blossoms putting on a show for two to three weeks. Heart-shaped leaves 2 to 6 inches in length emerge a reddish color, turning dark green in summer and then a bright canary yellow in autumn. The flowers also give rise to clusters of beanlike pods that remain on the tree into winter.

**Residents can request a similar tree, subject to approval.*



Dawn Euphemia Community Centre – Located in the heart of Florence, Ontario, the DECC has a picnic shelter, park for kids to play, and lots of room to wander, the Dawn-Euphemia Community Centre is the perfect location to spend time reminiscing while admiring a beautiful tree planted in memory of a loved one with ties to the Township of Dawn-Euphemia.

Rutherford Park – Located beside the main intersection in Rutherford, the Rutherford Park is a great location to commemorate loved ones with ties to the community. The park includes a gazebo to relax and enjoy some time to reminisce.



Shetland Conservation Area – Located on Bentpath Line, just outside of Shetland, the Conservation Area is a public campground surrounded by many trees and wildlife on the Sydenham River. Whether you're staying for the season, or spending the day with family at one of the picnic shelters, the Shetland Conservation Area is a great place to spend time surrounded by nature and reminisce.

****Subject to SCRCA approval – No response as of December 15, 2020***



Township of Dawn-Euphemia Memorial Tree Planting Order Form

Name: _____

Address: _____

Phone Number: _____

Email Address: _____

Please circle choice of tree:

1. Freeman Maple
2. Tulip Tree
3. Magnolia Tree
4. Eastern Redbud

Please circle choice of location:

1. D-E Community Centre
2. Rutherford Park
3. Shetland Conservation

**Refer to the Memorial Tree Planting Policy for pictures and descriptions of each tree.*

In Memory of: _____

Please mail or drop off completed form and payment to:

Township of Dawn-Euphemia
4591 Lambton Line, RR4
Dresden, Ontario
N0P 1M0
519-692-5148
admin@dawneuphemia.on.ca