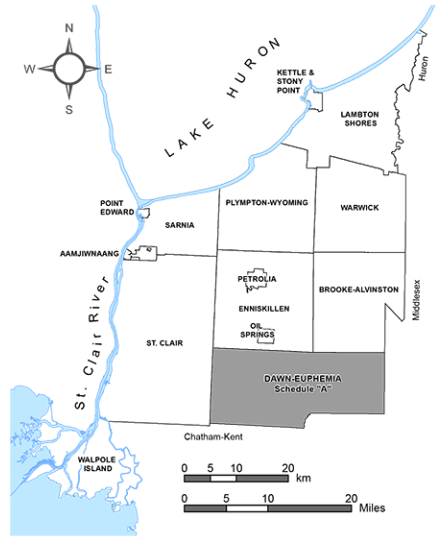


# Township of Dawn-Euphemia ZONING BY-LAW SCHEDULE "A"



## Township of Dawn-Euphemia ZONING BY-LAW SCHEDULE "A"

to By-law No. 54 of 2014

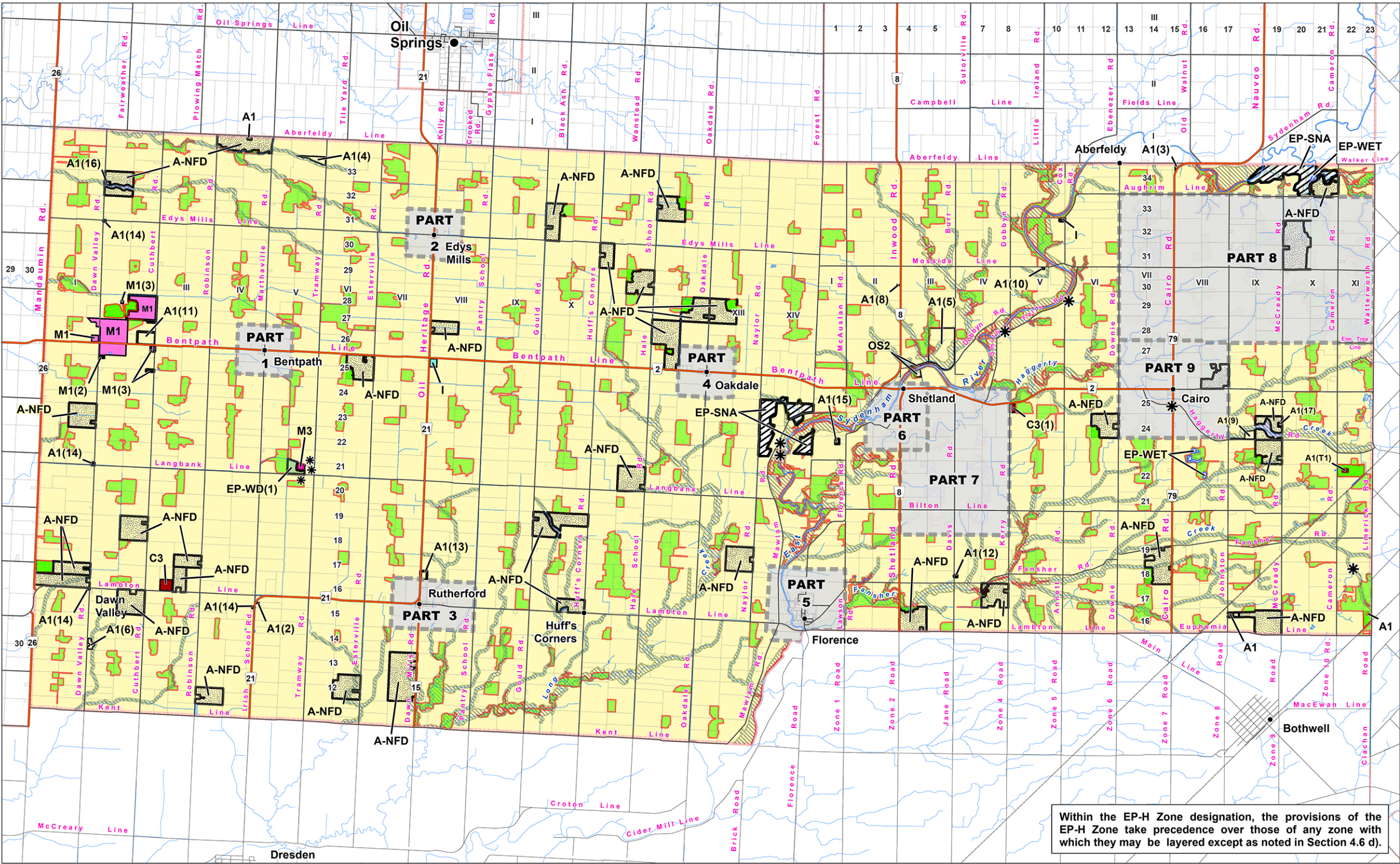
Passed this 24th day of November, 2014

William Bilton, Mayor

Michael Schnare, Administrator-Clerk

### Zoning By-law Amendments

ZBA # 03 of 2014, December 15, 2014  
ZBA # 25 of 2015, June 1, 2015  
ZBA # 31 of 2015, July 6, 2015  
ZBA # 44 of 2015, September 21, 2015  
ZBA # 21 of 2016, May 16, 2016  
ZBA # 23 of 2016, June 6, 2016  
ZBA # 40 of 2016, October 5, 2016  
ZBA # 18 of 2017, April 18, 2017  
ZBA # 23 of 2017, May 15, 2017  
ZBA # 30 of 2017, June 15, 2017  
ZBA # 20 of 2017, August 8, 2017  
ZBA # 41 of 2017, September 5, 2017  
ZBA # 5 of 2018, January 8, 2018  
ZBA # 16 of 2018, March 5, 2018  
ZBA # 19 of 2018, March 19, 2018  
ZBA # 22 of 2018, April 16, 2018  
ZBA # 19 of 2019, May 6, 2019  
ZBA # 27 of 2019, July 2, 2019  
ZBA # 29 of 2019, July 15, 2019



Within the EP-H Zone designation, the provisions of the EP-H Zone take precedence over those of any zone with which they may be layered except as noted in Section 4.6 d).

### LEGEND

- Assessment Parcels
- Rivers - Streams - Drainage
- Roads
- County Road
- Provincial Highway
- Railroad
- Waterbodies
- Active or Former Waste Disposal Site (Anderson Dataset : Lambton GWS 2004)
- Municipal Boundary
- Schedule Inset Boundary

### Zoning Index

- A1 Agricultural - 1
- A-NFD Agricultural - No Farm Dwelling
- C3 Rural Commercial
- I Institutional
- M1 Industrial
- M3 Industrial Waste Disposal
- OS2 Active Open Space - 2

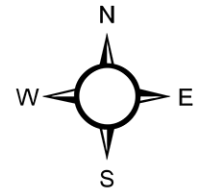
- EP-SNA (MNR - ANSI) (MNR - Life Science)
- EP-WET (MNR - OWES)
- EP-WD (LCNHS) (Significant Woodlot)
- EP-H (Local CA)

- \* Temporary Use ... (T1), ... (T2)
- \* Zone Exceptions ... (1), ... (2)
- \* Holding Zones ... (h), ... (h1), ... (h2)
- \* NOTE: For Zones with these suffixes refer to the text of the By-law for applicable zoning provisions.

### Area Estimator



Notes: Area Estimator generalized blocks (shown at left) are scaled to represent typical area measures.  
Area Estimator is properly scaled for Main Map ONLY.  
Acre area measures can be converted to hectares (ha) by dividing by (2.471).



### Reference

Disclaimer: These digital mapping products have been produced on the County of Lambton's Geographic Information System. Data provided herein is derived from sources with varying levels of accuracy and currency. This is not a survey product. The County of Lambton disclaims all responsibility for the accuracy or completeness of information contained herein. The County of Lambton assumes no responsibility for errors arising from use of these digital mapping products.

The Zoning By-law information contained herein is current as of the last recorded amendment noted under "Zoning By-law Amendments".

- Cadastral database is current to June 2013.  
- Wetlands Database is current to June 2014 (MNR).  
- Hazard Areas are determined by local Conservation Authorities and are Subject to Interpretation.

Projection: UTM NAD 83 Zone 17

COUNTY OF LAMBTON  
Planning and Development Services, August 1, 2014

www.lambtononline.ca

